

# Dalsland Canal

*Sometimes the journey is more important than the destination*

*Ideas and inspiration*

*Everything you need  
to plan your trip*

*Selected destinations*

*Industrial Heritage  
Site of the Year 2018*





# After a fantastic jubilee year, we c

2018 was an anniversary to remember.

The summer was simply fantastic. The weather gods decided to bless the Dalsland Canal and help us show off its best side on its 150th anniversary.

Local associations, companies and residents' communities stepped up to create a jubilee programme that attracted plenty of visitors to enjoy entertainment, exhibitions, talks and other events. A big thank you to everyone involved.

The aqueduct was chosen as the Industrial Heritage Site of the Year, and naturally we are very proud of this achievement. Following the completion of the aqueduct renovation project, it is set to continue to serve the canal for another 150 years, at the very least.

We gained a friendship canal. Representatives of the beautiful Crinan Canal in Scotland came to seal our bond of friendship to the tones of traditional bagpipe music.

And let's not forget the wonderful jubilee day in late August. Topping off the day was Crown Princess Victoria's arrival into Håverud in a canoe across Lake Upprudshöljen. In her speech, the Crown Princess declared her wholehearted agreement with the words of her ancestor, King Charles XV of Sweden, who spoke warmly of the area's beautiful landscape during the opening ceremony in 1868.

I would also like to mention that traffic on the canal increased by a whole 20 per cent in 2018. Now, with the successes of 2018 behind us, we are thrilled to invite our visitors to share what is set to be an exceptional 2019.

Book your trip on the Dalsland Canal. We can't wait to make your trip a memory to last a lifetime.



Benny Ruus  
Canal Director



# couldn't be more excited for 2019!



An experience for everyone	4–5
Valuing our cultural heritage	6–7
Welcome, say our lock keepers	8–9
As if it were made for canoeing	10–11
A natural harbour of your own or all the services you could need	12–13

Recommended ports of call	14–15
Rent a cabin by the canal	16–17
Plan your canal trip here	18–29
Map	30–31
Tourist offices	32





# AN EXPERIENCE FOR EVERYONE

**Two Brits, one barge and a Beagle named Maksi. They visited the Dalsland Canal last summer, and fell totally in love with it.**

Ten years ago, Alison Alderton and Roger Harrington did what they had always dreamed of. They sold their house in England and bought a barge. In the past, they had co-owned a boat, but this time they went the whole way. After travelling the UK and Ireland, they started thinking about bringing their barge, Lily, to Sweden.

"My father had read about the Dalsland Canal, and told me a long time ago that he would love to come here. This year, I wanted to find out what it was about the place that had

captured his imagination. We decided to spend a week here," says Roger.

## **One week turned into seven**

When we met them at the marina in Upperud, they had spent seven weeks on the canal.

"This is the most beautiful place we've been to during twelve years we've spent exploring the waterways of Europe." Totally fantastic. We have explored the whole canal and met so many friendly people," says Alison.

## **The lockkeepers are made for the job**

"I don't know how you recruit your lockkeepers. It is as if they were made for the job. So service-minded and incredibly friendly."

Lily is a relatively modern barge. She has everything Alison, Roger and Maksi need to live in complete comfort. But she is an exact replica of a Dutch barge from 1910. A real beauty which will very likely return to grace the canal during the 150th anniversary celebrations in 2018.

## **From Scotland to Dalsland**

Between Töcksfors and Östervallskog, just by the bridge operated by the sailors themselves, we catch sight of it. A beautiful white wooden boat. It turns out that it belongs to a Scottish couple who, when they reached retirement, decided to make their dream of exploring Europe by boat a reality. Jim and Marjory Miller have already explored the rivers and canals of

France, Germany, the Netherlands and Denmark, and now they've come to western Värmland. 'The nature here is just fantastic. We've been delighted with our trip along the Dalsland Canal.'

'We've made our way

through more or less the whole canal system, and it's beautiful from one end to the other.'



## Use our slipways

The lake system has 13 slipways. They offer great opportunities for people enjoying the canal aboard slightly smaller boats. The southernmost slipway is located at Upperud, and the northernmost at Östervallskog. Other ramps are located, for example, at Ed and Otteid. If you can't spend the night aboard your boat, there are plenty of hotels, youth hostels, cottages and chalets along the way. They are, however, usually

fully booked during the peak season, so we strongly recommend that you plan your trip and make reservations in advance. Or bring a tent. There are plenty of natural moorings, and you can pitch a tent anywhere other than in people's gardens, provided that you tidy up after yourselves and don't light fires on bare rock. Our slipways are located at marinas and you can find them listed on page 17.





# Preserving a cultural heritage

"Managing such a significant heritage feature is a great responsibility. The aqueduct is a unique construction. If Nils Ericson had not been such an expert canal and railway designer, he would probably never have been given permission to build it. The fact that it is still working today, without any radical restoration work, is a tribute to his technical genius."

Canal Director Benny Ruus is clearly impressed when he talks about the remarkable aqueduct at Håverud and its creator, Nils Ericson.

"He even considered the fact that we would have to repaint it, about 100 years after the grand opening. The design allows it to be "rolled" to the side fairly easily."

In the mid-19th Century, the intention was to make the canal the main communications route through the roadless areas of Dalsland and western Värmland. It seemed like a very good idea at the time, since it would only be necessary to dig short stretches of canal to link a series of long, narrow lakes. But then they hit on the problem of the Håverud rapids. Eve-

ryone thought they would prove an impossible obstacle - everyone except Nils Ericson, that is.

## **A respected name**

"At the time, Nils Ericson was a highly respected name. He had redesigned the Trollhätte Canal and the locks in Stockholm. He had built the Saima Canal in Finland, and he



drew up the guidelines for the Swedish railway network. When he stated that it would be possible to use an aqueduct to take traffic past the Håverud rapids, not many dared to argue with him. Even the sceptics kept quiet”, says Benny Ruus.

### **The cargo boats disappeared**

In 1868 the aqueduct was completed and Carl XV turned out with his entourage to open the Dalsland Canal.

This means that the canal will celebrate its 150th anniversary in 2018 and we intend to mark the occasion in every imaginable way.

With the completion of the canal it was planned that sawn timber and iron ore would be transported on barges between Stora Le and Köpmannebro. However, ten years later the railway was built in Dalsland, and the barges disappeared one by one.

“Yes, the canal had a short history

as a major freight route. A handful of barges still remained in service right up until the 1980s, but that was all. Recreational sailors probably don’t see this as such a bad thing though, since they have the whole canal to themselves now,” says Benny Ruus..

## Did you know that...



In 2018 the Dalsland Canal was chosen as Sweden’s Industrial Heritage Site of the Year. The prize was presented in Håverud by Crown Princess Victoria.

...the Håverud and Upperud lock areas are listed structures as of 2013. Here we see the symbolic sign being hung up on the canal office wall in Upperud.

...the Swedish Association for Building Preservation awarded Dalslands Kanal AB its 2013 award for outstanding contribution to the preservation of historic structures. The citation notes the company’s tireless long-term work with preserving,

restoring and developing the industrial heritage along the Dalsland Canal.

...the fourhorn sculpin, a fish species dating back to before the ice age, still lives in Lake Stora Le.

...the canal has 31 locks with 17 lock stations.

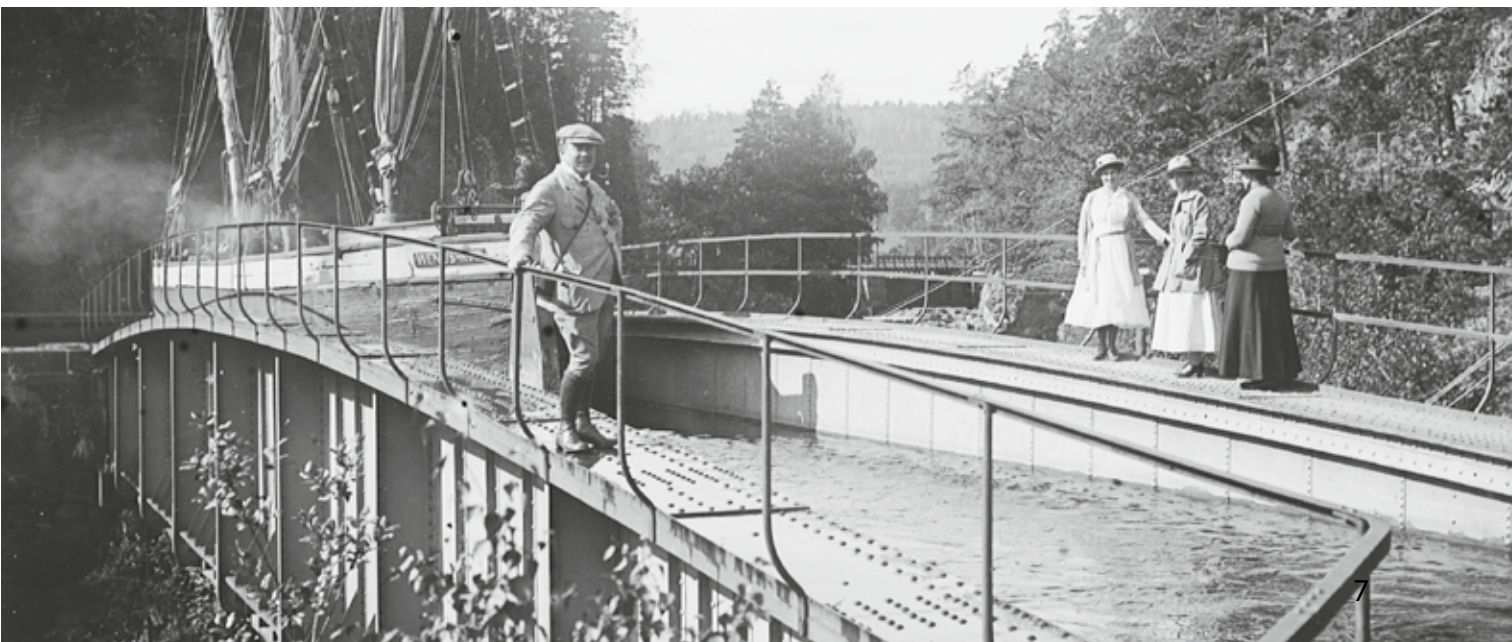
..the canal measures 250 km long, of which only 12 km are man-made.

...the difference in height between Lakes Stora Le and Vänern is 66 m.

..the aqueduct, which was built by Bergsunds Mekaniska Verkstad in Stockholm, contains 33,000 rivets.

..2,792 steamboats passed through the canal in 1905. As well as hundreds of cargo ships and barges.

Three cheers for the centenarian. Last summer, we celebrated the centenary of the northernmost part of the lake-and-canal system – the canal connecting Lakes Stora Lee and Östen. As part of this, the area around the locks in Töcksfors were given a facelift with works of art and new lighting. It’s now an attraction which you really shouldn’t miss.





# Welcome, says our lock keepers



**Peace and quiet reign at some of the locks along the canal system. But not at Håverud, the hub of the canal. This is a busy place, at any time of the day.**



Peace and quiet reign at some of the locks along the canal system. But not at Håverud, the hub of the canal. This is a busy place, at any time of the day. During the peak season, visitors may have to wait for an hour to get into the lock, but that really doesn't matter since there is lots to see and do in Håverud. Restaurants, glassworks, business exhibition, or just a chance to sit in the sun enjoying a nice big ice cream. Three lock keepers are on duty when Håverud is at its busiest. And they really do have their hands full. "Lunch is often just a sandwich in the control hut. But it's great fun. Lots of boats and wonderful visitors make the day go quickly", says Kim Stücken, who has worked as a lock keeper in Håverud for five seasons. Kim will soon finish his training as a ship's captain, so he will be spending lots of time on the water in the future as well.





*Annika Sandell appreciates time away from the city.*

Fredrika Björk is hurrying between the locks.

"Here's a boat which draws quite a bit of water", she says.

"Things are going to get a bit exciting."

The sill of the lock is 1.8 metres below the surface. That's about the same as the draught of many of the larger sailing boats. In this case, the boat slides over the sill with the aid of a little counterflow from the lock.

"That went well", says Fredrika, as she catches her breath.

### Canoeists at Krokfors

At Krokfors, we meet lockkeeper Alf Olsson. He is spending his first season on the canal, and he is really enjoying himself.

"Many canoeists from lots of different countries visit Krokfors. That's what I enjoy most. Meeting people from

other cultures. Two canoeists from Lyon in France came past just now. They spoke excellent English, so we got on really well."

"Most visitors also like the fact that we have a small kiosk here in Krokfors. It gives them the chance to enjoy an ice cream. I certainly don't regret that I grabbed the chance to work here."

### Annika loves Töcksfors

Working as a lock keeper in Töcksfors is a little bit different. You live in a tiny cottage almost in the middle of the forest, manage two locks located some distance from each other, and travel by service boat from one to the other to get there on time. Although there is less need to rush if the crew of visiting boats decide to stop at the large shopping centre.

This is Annika Sandell's kingdom. She normally lives in Gothenburg, is doing a university course in health and diet, and has suddenly found herself in the middle of nowhere.

"I love it", she laughs.

"It is great to take a break from the city.

A friend of mine has worked as lock keeper in the past, and really enjoyed it. And I'm originally from Dalsland, although I've never been to Töcksfors before."

"Slightly primitive living conditions don't bother me, and the work is great fun."

Almost everyone aboard the visiting boats is in a good mood. Even if it's pouring with rain, we still laugh together. There isn't much else you can do."

### A small piece of Paradise

"It's a small piece of Paradise."

Thomas Petman and his children from Åmål stopped off at Snäcke and ended up staying quite a while.

The lock keepers, Gunilla Lundbom and Bo Timle, have made a real effort for young families and there's something new happening all the time. Glittra the Dragon, now a couple of years old, is still there, of course but no one knows yet what new things will pop up during the summer. The only way to find out is to pay a visit.



*Thomas Petman and his children feel that Snäcke is a small piece of Paradise.*

# 31 locks lift you 67 metres

The Dalsland Canal has 31 locks, and the difference in height between Lake Vänern and Töcksfors is 67 metres.

...

The locks are dimensioned for boats measuring at most 22.75 m long, 4.05 m wide, 1.8 m deep and 12 m in sail height. Some stretches can accommodate larger boats.

...

The smallest height difference is in the Köpmannebro lock, just 8 cm. The four locks in Långed raise (or lower) boats just over 13 m.

Two of the canal's locks are still manually operated: The one in Strömmen and one in Buterud.

The Strömmen lock has a history much longer than that of the actual canal. As early as 1842, people could sail between Fröskog and Snäcke. That's 26 years before the opening of the Dalsland Canal.

...

In the early days, the Dalsland Canal started in Upperud. The lock in Köpmannebro was considered separate from the canal until 1909. That's why

canal engineer Nils Ericson had his home and office built in Upperud. For many years, the house was used for the administration of the canal, so it is called the Manager's Home. Today it is once again the canal office.

...

nd last year we started our own blog. Or rather, Gunilla in Snäcke did. For those who read Swedish, it's full of funny and clever thoughts about the life of a lock keeper on the Dalsland Canal. You'll find it on our website under the Inspiration tab. It's a gem!



# 'I can guarantee that this won't be my last visit'



**Florian Halim from Düsseldorf** has hung a hammock between two trees on a small island in Lake Foxen.

The setting is a glorious late summer evening, and Florian is relaxing after a day canoeing.

This is his first trip to Sweden, and he has enjoyed it immensely. 'It's absolutely fantastic here. I'll definitely be returning,' he says. 'I've never seen nature like this before. It's wonderful.'

**Florian is part of a group** of nine German canoers, accompanied by guide Nikolay. They started their journey in Lennartsfors, and have been on the lake all day.

When we meet up with the group, they are cooking their evening meal at one of

the 120 permanent campsites dotted around the lake system.

Well, almost all of them. Florian is enjoying lying back in his hammock.

Soon they'll be getting a fire going at the barbecue site, and it won't be long before delicious smells begin filling the air from the pans. The sun is starting to sink behind the treetops, and the whole lake is glistening.

There is no doubt in Florian's mind that this will not be the last time he spends a week of his summer in a canoe on the Dalsland Canal.







# Made for canoeing

The Dalsland Canal is made for canoeing. The lakes are long and narrow, so there are hardly ever any waves. The water is crystal clear, and so clean that you can drink straight out of it. And when you're in a canoe, you'll see plenty of wildlife. Loons may disturb your sleep, but that's the sort of thing you have to put up with in the wild. And the elk are friendly. Most of them, anyway...

...

If you didn't bring your own canoe, there are more than ten canoe centres in the lake system where you can rent one, along with all the equipment you need. They also offer tips and advice.

If you're planning to go paddling in the Dalsland Canal, it's a good idea to get the Canoe Country brochure, which contains a canoe map and a guide to everything you need to know along the way. It's easiest to order it in advance from [www.dalslandskanal.se](http://www.dalslandskanal.se). That way you can get ready before you even leave home. The brochure is available in Swedish, German and English..

...

If you have a portage cart for your canoe, you can experience two canals on the same trip. There's one location where the Dalsland Canal is just two kilometres from Norway's Halden Canal. It's a bit of an effort to carry a canoe that distance, but it's easy to roll it.







*These three families from Norway found their own favourite natural harbour a couple of years ago. They love coming back here.*

# A natural harbour of your own, or all the facilities you could want

We head out to Lake Foxen, north of Lennartsfors, on a wonderful evening towards the end of July. We are looking for a family who have found their own natural harbour. We do not have to search for long, and we find not one family, but three, who have just eaten dinner and are enjoying the evening sun. The grownups are soaking up the sun, while the kids are more interested in swimming. It's 26 degrees in the water, they shout, before leaping in from the rocks.

"We're travelling together along the canal," explain the family groups Fagermoen/Jørgensen, Enger/Gløtta and Aaserud, all from Aurskog in Norway.

Aurskog is situated by the Haldenvassdraget waterway, so it is a relatively short land crossing to the Dalsland Canal.

"It's nearby, we've been here several times before and even made trips down to Lake Vänern. And we'll definitely be coming back. This is a fantastic place to be."

## **Not the first time**

This particular natural harbour is a little special, almost

luxurious. It has a small jetty, a spot for barbecuing and even a table for dining. A local boat club looks after the island.

"We found this spot a couple of years ago and have been back several times since then. We've been here two days now and it's absolutely wonderful. Yesterday we had a barbecue together and enjoyed the sunset. But today we'll be having meatballs and mashed potato."

The little island in Lake Foxen would have been a perfectly quiet and tranquil haven when we left the group, except for the gleeful yelling and splashing of the kids.



## Modern guest harbours

The canal system offers an almost endless succession of natural harbours. But of course there are also many fine guest harbours of varying sizes and standards. In fact there are 20 of them, strategically placed along the lake system. From Köpmannebro in the south to Östervallskog in the north, and from Sillebotten in the east to Otteid, in Norway, in the west. Some offer a very high standard and have a restaurant, bar, laundry facilities, pump-out station and fuel. Others simply have a small kiosk run by the local children, and a wood-fired sauna down by the lakeside. You can read more about the guest harbours on the Dalsland Canal on page 17. The natural harbours are yours to discover.

*If you stay overnight in Bengtsfors you have access to all the facilities of a small town. There are plenty of shops, restaurants, cafés, a liquor store and, within comfortable walking distance, the local heritage museum and the House of Straw (Halmens Hus) at Majberget.*



*Upperud's beautiful guest harbour is one of the first you encounter as you enter the canal from the south.*



# 8 good reasons to choose the right canal



## **The studio in Långbron**

Stenebyskolan in Dals Långed is an arts and crafts school, and part of the University of Gothenburg. The Dalsland Canal owns an old warehouse in Långbron. Why not work together to turn the old warehouse into an art studio? Steneby student, Josha Woudstra, was given the job, and the old warehouse has now been transformed into a really cosy art gallery. Right beside the lock in Långbron.



## **Båstnäs Car Cemetery**

When the winding gravel path reaches a sign stating 'Här slutar allmän väg', or 'Public road ends here', you have arrived. This is the car breaker's yard of the Ivansson brothers. Now nature has taken over, creating a unique car cemetery. Båstnäs is located to the west of Lake Foxen.



## **Västra Fågelvik church**

Many of the churches along the Dalsland Canal are situated in beautiful countryside. And the one at Västra Fågelvik is no exception. The church was completed in 1859, and it stands next to the site of a much older church. The architect was Albert Törnqvist, and our guess is that he easily found inspiration on the stunningly beautiful peninsula on Lake Foxen.



## **The upper lock at Töcksfors**

In 2018, the Dalsland Canal will be 150 years old. But the northernmost section, between Töcksfors and Östervallskog, was not built until 1915. During the Centenary celebration, the upper lock at Töcksfors was decorated with works of art by Lolo Funch Andersson and Julius Braunschweig. A spectacular permanent light display was also installed. Although the

nights are short in Sweden in summer, you really should try to visit the upper lock in Töcksfors after dark.





5

### Lennartsfors

Lots of our visitors pass through the impressive flight of locks at Lennartsfors. However, not all of them know just what this idyllic factory village has to offer.

The village is home to Strömsborgs Café, for example, with its fantastic views over Lake Foxen. Just below the café is the village's excellent guest harbour. During the summer, a whole range of different entertainment events are put on in the area. Lennartsfors may be a little sleepy in the winter, but in the summer the community truly comes to life.



6

### Café in Stora Lee

If you fancy a coffee you should definitely stop off at Böviken in Stora Lee and take a walk up to the farm café. The bread is all home-baked, the coffee is strong and the setting is spectacular. Take a coffee break in style!



7

### Höljerudsforsarna Nature Reserve

Not far from locks 18, 19 and 20, between Lakes Bengstbrohöljen and Laxsjön, you will find three untouched stretches of rapids. The Höljeforslussarna locks are surrounded by pristine forests, full of a rich array of flora and fauna. Just one of the species visitors might catch sight of is a large population of white-throated dippers. This is the perfect spot to take a break, fill up a thermos flask, and simply enjoy completely untouched nature.



8

### Dalsland Center

Håverud is Dalsland's most visited tourist destination. And just a stone's throw away from the aqueduct is Dalsland Center. Here you'll find a tourist information centre, exhibitions, and activities for children. Next door is a glassworks, and an open-air café is located just outside the door – the perfect spot for salmon-lovers to enjoy some culinary delights. Håverud and Dalsland Center form the hub of the lake system.

# Please sit down



*If you are not staying on a boat, we have refurbished a number of cottages with fantastic locations right next to the canal.*

## **Lillstugan i Lennartsfors**

Lillstugan is situated by the lower lock in Lennartsfors, right by the shore of lake Lelång. The cottage is of a good standard. It is close to the countryside, places where you can swim and fish, and various cultural attractions.

Floor area: 36 m<sup>2</sup>

Living room with open fire

Fully equipped kitchen

Bedroom with double bed, sleeping loft with two mattresses

Shower and toilet

Porch

Use of rowing boat and two cycles included

Price per week: June-Aug. SEK 5,200. May, September

SEK 42 00. Price per day: June-Aug. SEK 1,050

May, September SEK 850





### Buterudsstugan

The cabin is situated near the lock in Buterud. Close to nature and the canal.

Accommodation area approx. 20 sq. m.

Living room with sofa bed, fully equipped kitchen, shower and toilet. Nearest town is Mellerud, around 23 km away.

Distance to Häverud approx 25 km.

Price per week: SEK 2500.

Price per day: SEK 500.



### Sjöstugan i Upperud

The cottage is situated by lake Upperudshöljen, close to the lock in Upperud. The cottage is of a good standard and it is two kilometres to Häverud and the aqueduct. A minor road runs close to the cottage. Pets allowed.

Floor area: 22 m<sup>2</sup>

Living room with double sofa bed

Fully equipped kitchen

Shower and toilet

Porch.

Use of rowing boat and two cycles included

Price per week: June-Aug SEK 4,100, May, Sept.

SEK 3 100. Price per day: June-Aug. SEK 820, May, September SEK 620.



### Mustastugan i Mustadfors

The cottage is situated by lake Katrineholmshöljen, close to the lock in Mustadfors, Dals Långed.

Floor area: 21 m<sup>2</sup> (equipped for two persons)

Living room with sofa bed. loft with two mattresses

Fully equipped kitchen

Shower and toilet

Garden furniture. Pets allowed. Rowing boat

Price per week: SEK 3,500

Price per day: SEK 700



These are a few of the cottages we have available to rent.

All cottages can be booked through Dalslands Kanal AB, email [info@dalslandskanal.se](mailto:info@dalslandskanal.se) or call +46 530-447 50.

More information on [www.dalslandskanal.se](http://www.dalslandskanal.se)

# Start planning your canal trip here

## Open 10 June - 18 Aug 2019

<b>10 June - 30 June</b>	
Monday–Saturday	9 a.m.-7 p.m.
Sundays	11 a.m.-4 p.m.

<b>Midsummer</b>	
Midsummer's Eve (21 June)	11 a.m.-4 p.m.
Midsummer's Day (22 June)	11 a.m.-4 p.m.

<b>1 July - 31 July</b>	
Monday–Saturday	9 a.m.-7 p.m.
Sundays	10 a.m.-5 p.m.

<b>1 July - 31 July Håverud</b>	
Monday–Saturday	8 a.m.-8 p.m.
Sundays	10 a.m.-5 p.m.

<b>1 July - 31 July Upperud</b>	
Monday–Saturday	9 a.m.-8 p.m.
Sundays	10 a.m.-5 p.m.

<b>1 August -18 August</b>	
Monday–Saturday	9 a.m.-7 p.m.
Sundays	10 a.m.-5 p.m.

## Additional open 19-25 August

Monday-Sunday	12 a.m.-4 p.m.
In Lennartsfors, Gustavsfors and Krokfors.	

**All other lock stations are closed.**

**You should not enter a lock if there is not enough time to get through the lock before it closes for the day. See page 20.**

## Reservations 1-9 June, 19 August–6 September

When the locks are closed, you can order special openings (at a special rate) if this is not a problem for the canal company. The order must be placed no more than five days before the required date. Contact the canal office on phone +46 (0)530 447 50.

Some changes may occur in this information.

## Fees and payment 2019

<b>Leisure boats -4,99 m (incl. rowboat)</b>	SEK 50/lock basin
Whole canal round trip	SEK 2100
<b>Leisure boats 5,00-7,99 m (incl. rowboats)</b>	SEK 120/lock basin
Whole canal round trip	SEK 2700
<b>Leisure boats 8,00- m (incl. rowboats)</b>	SEK 160/lock basin
Whole canal round trip	SEK 3400
<b>Caravan pontoon/houseboat</b>	SEK 200/lock basin
<b>Canoes/kayaks -5,99 m</b>	SEK 40/lock basin
<b>Canoes/kayaks 6- m</b>	SEK 115/lock basin
<b>Tow dinghy</b>	SEK 30/lock basin*
*no charge for tow dinghy moored so that only the aft drags in the water.	

Lock tickets can be purchased by credit card in Köpmannebro, Lennartsfors and Töcksfors (not American Express). At other lock stations, tickets have to be paid for in cash (SEK). Unused lock tickets are not refundable. Return tickets only apply for one season.

At Håverud you should try to go through the locks before 10.00 or after 16.00.

### Buy a return ticket and save money!

Return tickets are cheaper and make things easier. You just pay once – when you start your journey, and you get access to the entire canal and all its locks. Single tickets only make sense if you are making a short trip.

## Dalsland canal

Length	254 km
Locks	31
Stations	17
Total difference in height	66 m

## Maximum dimensions

Length	22,75 m
Width	4,05 m
Depth	1,80 m

## Maximum sail height

To Lennartsfors	17 m
To Töcksfors	15 m
The tributaries of Silarna	12 m**
Snäcke canal	14 m
To Ed	14,5 m

\*\* See nautical chart



Harb. depth	Guest berths	Mooring	Harbour host	Harbour fee	Other
Köpmannebro	2,5 m	6 to10	Alongside	Dalslands Kanal AB +46 530-311 10	SEK 90 Sewage disposal. Guest jetty s. of the lock may be used for temporary mooring daytime. Boats longer than 14 m double fee.
Upperud	2,5-12 m	17	Y-boom/buoy Alongside	Bengt Orthagen +46 76-7830555	SEK 100 Sewage disposal. Spången marina south of the lock.
Håverud	1,8 m	25	Y-boom/ Buoy New bridge	Håfreströms IF Caretaker +46 70-219 79 15	SEK 140 1,5 km Pump-out station. Crane. Guest jetties below/SW of the lock. Service at the camping. Shop.
Mustadfors	1,8 m	10	Buoy	Roger Karlsson +46 73-420 59 35	SEK 150 Sewage disp., barbecue site. E. Katrineholmshöljen.
Långbron	1,5	6	Buoy	Åke I Andersson +46 531-408 83 +46 70 565 26 43	SEK 70 TC 1,5 km Cycles to borrow. Visitors marina's above/NE of the lock. Exposed in case of strong NW wind.
Laxsjön	1-1,8 m	10	Anchor	Laxsjöns Camping +46 531-300 10 www.laxsjon.se	SEK 100 On SW side of Lake Laxsjön. Keelboats on the north side of the jetty. Service at the camping.
Baldersnäs	1,2 m- >1,8 m	12	Y-boom/buoy/ anchor	Herrgård +46 531 41213	SEK 150 At Baldersnäs Herrgård. Exposed to swell in case of W wind. Craft house, exhibitions, park. Hotel, landrace farm, farm shop.
Bengtstors	1,5-3 m	45	Buoy/ anchor	Bengtstors kommun +46 531-52 60 00	SEK 200 (2012) Park with playground. In town centre. Largest supply of nearby services along the Canal. Pump-out station. Diesel, petrol and LPG by the din-X filling station.
Gustavstors	2 m	16	Buoy	Bengtstors kommun +46 531-52 60 00	SEK 155 The jetty is below and S of lock. Crane. Petrol and LPG 100 m.
Dalslands Gästgiveri Änimmien NE	1,5-6 m	8-10	Alongside	Dalslands Gästgiveri +46 532-250 11	SEK 125 Incl. el. Also hotel.
Ärrsjön (Fröskog)	1,8 m	3	Alongside/buoy	Ämåls gästhamn	WC 3 km, Fengersfors
Ärjäng	2 m	15	Buoy/ alongside	Lennart Olsson +46 73-025 98 03	SEK 150 Incl. 700 m 1,2 km Boating club's jetty in northern part of V Silen.
Sillebotten	2-3 m	4	Y-boom/ Anchor	Sillebottens Byalag Katarina +46 70-374 20 26	SEK 50 WC Northern part of Östra Silen.
Signebyn	1,5-3 m	3	Buoy	Kenneth Karlsson +46 76-111 64 62	SEK 50 WC Northern part of Östra Silen.
Lennartstors	3 m	15-18	Buoy	Lennartstors Båtklubb Erik Davidsson +46 573-301 67	SEK 100 300 m Klint jetty in the southernmost part of Foxen. Toilet emptying.
Holmerudstors	2,5 m	11	Buoy/ alongside	Lars-Olov Strömner +46 70 226 50 49	SEK 130 Incl. el. Service house, sauna SEK 50/boat. Kiosk operated by district children Hiking trail.
Töckstors	3,5 m	14	Alongside/ buoy	Örjan Johansson +46 70 238 76 70 +46 573 312 22	SEK 150 incl. 1 km Pump-out station. Petrol and diesel at southern lock. Notheast tip of Sandviken.
Östervallskog	2 m	20	Y-boom/Anchor alongside	Conny Haglund +46 70-586 94 35	SEK 60 500 m 500 m 500 m Quay and jetties.
Nössemark	2 m	15 + temporary	Y-boom/ alongside	Lennart Gustavsson +46 70-522 17 93	SEK 150 SEK 40 Sewage disp. Crane, in Strandviken, St Lee S ferry berth
Ed	1-6 m	10	Y-boom/ alongside	Dals Eds Båtklubb +46 76 781 10 58	SEK 100 incl. 2 km Quay delivery of fuel and LPG by agreement. Pump-out station. Southern end of Lake Stora Lee.
Otteid	2 m	20	Y-boom/ alongside	Haldenvassdragets Kanalsällskap Steinar Fundingsrud +47 698 11 200	SEK 100 incl. NW side of Engsvika, Östra Otteid.

# Dream holiday in your “own” boat

Imagine cruising the beautiful lakes and canals of Dalsland and Värmland in your very own boat. Or at least a boat that is yours for a week or two. Dalslands Kanal AB rents out the motorboat Nimbus 2600.

Order your boat from Dalslands Kanal AB, phone +46 (0)530 447 50. The boat is insured, but you are responsible for the franchise – which you pay like a deposit

for the boat. You get your deposit back when you return the boat in clean, undamaged condition, fully tanked and with the same equipment it had when you picked it up.

A warm welcome to an exciting adventure on the Dalsland canal – in your “own” boat!

Read more on [www.dalslandskanal.se](http://www.dalslandskanal.se)



## Nimbus 2600 (1 available)

Built	1985
Type	Motorboat, two cabins
Berths	4-5
Length x Eidth	8,45 x 2,85
Motor	Volvo Penta TAMD 30, 105 hp
Cruising speed	10-12 knots, maximum speed 15 knots
Fuel consumption	About 1 L/nautic mile at cruising speed
Other equipment	Windlass, bow thruster, CD changer, shower on the bathing platform, gas range, GPS/sonar, shore power, radio, toilet, trim tabs, TV aerial, oven, water heater, heat.
Prerequisites for renting	Skipper must have proper knowledge of navigation and previous experience of operating boats of this size class. Documentation is required.
Pick-up	Friday from 3 p.m.
Return	Friday before 10 a.m.
Weekly rent	15 June - 19 June SEK 10 000 19 June - 14 Aug. SEK 14 995 14 Aug.-21 Aug. SEK 11 500 Lockage fee in both directions included.
Deposit	SEK 6.000
Pick up and return the boat at	Lock station in Köpmannebro



## Vessels with historical appeal

Occasionally the Dalsland Canal is visited by ships and boats that have an interesting history or unique appeal.

We think that's great!

They may be old steamboats, tugs, freighters or other vessels that are distinctive in some way. It's a good idea to contact the canal company to help plan your schedule.

In some cases we can also offer reduced charges or even free passage through locks. Read more on [www.dalslandskanal.se](http://www.dalslandskanal.se).



## Using the locks

Negotiating the locks is not as difficult as it perhaps appears. Begin by attracting the attention of the lockkeeper. After that you will be shown into the lock as soon as possible. The important thing is that you must follow the instructions given by the specially trained lockkeepers. And remember that it is only the lockkeepers who may open the locks and bridges. You can read more about the locks in the Description of the Canal (in Swedish only) on the nautical chart. and on the reverse side of the receipt for using the locks.

In general, boats go through the locks in the same order that they come to the waiting jetty. However, sometimes boats must be taken out of order so that the available space in the lock can be best utilised. The lockkeeper will give a sign when it is time to sail into the lock. In all the locks there are two mooring ropes for every boat. One is placed round the cleat on the foredeck and the other round the cleat in the stern.

## Equipment

The following equipment is required on all boats: two boathooks, 4-6 substantial fenders and, of course, life jackets. Due to the fact that the same lockkeeper can at times be in charge of several locks, delays can be expected. The lockkeepers also have two breaks of 30 minutes each day, which can be taken at varying times.

## A few rules for your own and other people's safety!

- It goes without saying that you and your crew wear life-jackets while on board. Canoeists must always wear life vests when passing through the locks.
- For your own and other people's safety, there is a ban on smoking and open fire when you are passing through a lock.
- Engines or machines should be turned off when you are passing through a lock.

## Fishing

Fishing with hand-held equipment is allowed in many lakes but you must of course have a fishing permit. It is now even easier to fish in this area, since you can buy a fishing permit which covers almost all the lakes which form part of the Dalsland Canal.

The week-long permit costs SEK 400, and is available from the locks at Köpmannebro, Lennartsfors, Töcksfors and Gustavsfors, from the Dalsland Center in Håverud and from the tourist office in Bengtsfors.

## Insurance

Dalslands Kanal AB have insurance which covers both property and personnel. The insurance covers damage which can be proved to have been caused by shortcomings, carelessness or negligence on the part of the company or it's personnel. If damage occurs it should immediately be inspected by the lockkeeper and the boat owner together, and the latter should then send a damage report to the canal manager.

## Boats in canal traffic shall be insured

All boats sailing in Dalsland Canal are required to have valid liability insurance for boat. The skipper/owner is responsible for it exists (see "General provisions" on the canals website and on the lock receipt).

## CanoeLand - for those who go by canoe or kayak

The name – Canoe Land – says it all... 40 pages of extensive

information about our unique canoeing waters, including a canoeing map divided into sectors, campsite information, nature conservation – animals and plants, canoeing techniques, planning and safety. The booklet is a must for those who intend to go canoeing in the lake system of the Dalsland Canal!

## The Canal's own home page - [www.dalslandskanal.se](http://www.dalslandskanal.se)

There you will find most things that a boating fan may be looking for; facts about the Canal, latest news, lots of links, maps, offers, special information for those using their own boat or canoe, information about passenger vessels, monthly competitions, tourist information, accommodation along the Canal, and, not least, the story about the Aqueduct.

## Lake Vänern

If you're planning to cross Lake Vänern between Vänersborg and Köpmannebro, have a look at [www.lakevanern.se](http://www.lakevanern.se).

## Trollhätte Canal

When travelling the whole route to and from Göteborg, there is an additional fee for the Trollhätte Canal. The fee is SEK 1 000 (2015) one way. If you want to order the brochure "Med fritidsbåt genom Trollhätte kanal (Pleasure Boating through the Trollhätte Canal), please contact the Swedish National Maritime Administration/Lake Vänern naval traffic region, phone +46 771-63 00 00.

## Disposal of human waste - Pump-out stations

The Dalsland Canal is known for its clean water. In some parts of it you are actually travelling in pure drinking-water.

In order to keep the water clean, we have a few simple but important rules for handling toilet waste: Toilet waste must not be disposed of in man-made parts of the Canal or near guest harbours or population centres. Please use the three pump-out stations for disposal of human waste. Septic tanks may be emptied free of charge at the following places:

- Håverud - at the visit marina
- Bengtsfors - at the visit marina
- Gustavsfors - at the visit marina
- Dals Ed - at the visit marina
- Töcksfors - at the visit marina

The pump-out stations' suction nozzle are made of soft rubber and will fit 32-50 mm deck flanges. Only in very exceptional cases may waste be discharged into the major lakes. Sewage disposals for emptying of so-called Porta Potti toilets are available in most guest harbours – see list of guest harbours.

## Service stations - guest harbours

Within the lake system the Canal company has built service stations at some places. There you will find WC, HWC, shower, sewage disposal and washing- machine/tumble-drier. For a small fee you will have access to these buildings. You will find service stations at the following places:

- Köpmannebro - lock station
- Baldersnäs - visit marina
- Gustavsfors - visit marina
- Nössemark - visit marina
- Dals Ed - visit marina
- Töcksfors - visit marina

## Boat tour

This map shows Europe's most interesting boat tour alternatives! You can have your boat transported from Töcksfors to Ørje, Töcksfors to Oslo, Nössemark to Halden or the other direction, letting you experience a whole region in two weeks: Lake Vänern, the beautiful Dalsland Canal, the Halden Canal in Norway, the North Sea, the Swedish West Coast, Göteborg and the interesting Trollhätte Canal. You can also get to the Dalsland Canal from the Säffle Canal over land from Arvika to Årjäng. This is a shorter tour, from Lake Vänern, via the Säffle Canal to the Dalsland Canal and down into Lake Vänern again (or the other direction).

## Nautical charts you'll need:

Port of Göteborg	9312 and 9313
Trollhätte Canal (Göta Älv)	1352, 1353
Lake Vänern	
(Vänersborg–Köpmannebro)	135, Båtsporkort Vänern
Dalsland Canal	Båtsporkort Dalslands kanal
Lake Vänern with Säffle Canal	131–134, 1331
Halden Canal	Båtsporkort og fritidkart Haldenvassdraget
Halden–Göteborg	Båtsporkort Västkusten norra and Västkusten södra
Malmö/Copenhagen–Göteborg	921–925, 931

All of these charts can be ordered from any store that sells nautical charts. The lock keeper in Köpmannebro sells charts 1352, 1353. The lock keeper in Lennartsfors and the land transport company in Nössemark sell the charts for the Dalsland Canals. For info on the Halden Canal, contact Haldenturist +47 69190980. For info on the Säffle Canal, contact Vänerns Sjötrafikområde +46 520 472200.

You should not enter a lock if there is not enough time to get through the lock before it closes for the day.

## Locks

Lock stations per station	Number of locks excl. waiting time	Req. time per station nästa sluss	Trav. time to the next lock
Köpmannebro	1	10 min	45 min
Upperud	2	20 min	10 min
Häverud	4	60 min	20 min
Buterud	1	10 min	40 min
Mustadfors	1	15 min	10 min
Långed	4	60 min	10 min
Långbron	1	15 min	25 min
Billingsfors	2	30 min	5 min
18:e	1	10 min	10 min
19:e och 20:e	2	30 min	15 min
Bengtsfors	2	25 min	160 min
Lennartsfors	3	30 min	95 min
Töcksfors	2	60 min	
Bengtsfors	2	25 min	100 min
Gustavsfors	1	20 min	45 min
Krokfors	2	25 min	
Köpmannebro	1	10 min	50 min
Snäcke	1	20 min	45 min
Strömmen	1	15 min	



## Land transportation

### Nössemark-Halden

Max. 13-14 x 3.9 m. 9-10 tons.  
Max. height 4.5 m.  
Price given on request.  
Nössemark Båttransport  
Strandmon, Nössemark,  
SE-668 91 Ed.  
Transport companies  
Magne +47 91 61 51 10,  
Marius +47 48 05 78 59

### Västkusten-Ed

Max 15 m. 10 ton.  
Transport av motor- och  
segelbåtar.  
Av- och påmastning  
GH Lyft  
Tel. 0736-53 59 32

### West coast-Ed

Max. 15 m. 10 tons.  
Sailboats and motorboats.  
Stepping and unstepping the mast  
GH Lyft  
Tel. +46 (0)736-53 59 32

### West coast-Dalsland

Transportation of motorboats  
and sailboats. Also transportation  
Vänersborg/Trollhättan-  
Gothenburg.  
Ask for detailed price.  
LastväxlarCarlsson AB  
Tel +46 (0)70-346 40 41

### Årjäng-Töcksfors-Arvika

Max. 10 x 3.5 m. 8 tons.  
Ask for price.  
LK:s Bilbärgning  
Norumsv. 5, SE-670 40 Åmotfors.  
Tel. +46 571-304 00,  
+46 570-133 00  
+46 070-672 04 00

All transports can be carried out  
in the opposite direction.





# DALSLAND CANAL AND THE DALSLAND NORDMARKEN LAKE DISTRICT

Canal facts, Services, Campsites, Attractions,  
Activities, Restaurants and much more!

**DOWNLOAD THE APP!**



# Treat yourself to a canal tour in one of our passenger boats

*You do not need your own boat to enjoy the Dalsland Canal. You do not even need to know the difference between port and starboard.*

*The comfortable passenger vessels Dalslandia and Storholmen takes you on an unforgettable ride on the canal.*

*Both ships serving good, home-cooked food. During the tour they pass the 150-year-old aqueduct and Baldersnäs Manor.*

*In collaboration with Dal Västra Värmlands Järnväg it will be a trip by boat and train, a fantastic tour.*

*A good advice is to book the ticket in advance. For some reason, the tours are very popular.*



## M/S Dalslandia

Dalslandia traffic the canal between Häverud and Bengtsfors according to the timetable for the period June 17 to August 24 (not Midsummer weekend) with departure from Häverud Monday, Wednesday and Friday and Bengtsfors Tuesday, Thursday and Saturday. If you buy a round-trip ticket includes train ride back.

Group tours are welcome from May to September.



## M/S Storholmen

The turn of the century boat Storholmen has operated Dalsland Canal since 1938. Storholmen operates Häverud-Bengtsfors during the period June 17 to August 24 (not Midsummer weekend) with departure from Häverud Tuesday, Thursday and Saturday and Bengtsfors Monday, Wednesday and Friday. In combination with the train journey it will be an amazing tour. We also offer customized tours from May to September.



Tickets and information +46 (0)70 54 10 633, +46 (0)70 33 82 550.  
[kanaltrafik@storholmen.com](mailto:kanaltrafik@storholmen.com), [www.dalslandia.com](http://www.dalslandia.com)

Tickets and information +46 (0)70 54 10 633, +46 (0)70 33 82 550.  
[kanaltrafik@storholmen.com](mailto:kanaltrafik@storholmen.com), [www.storholmen.com](http://www.storholmen.com)

**Please note that ticket bookings are made to the shipping company. See you this summer!**

Both vessels are inspected according to the Maritime Administration ISM Code and members of SWEREF.

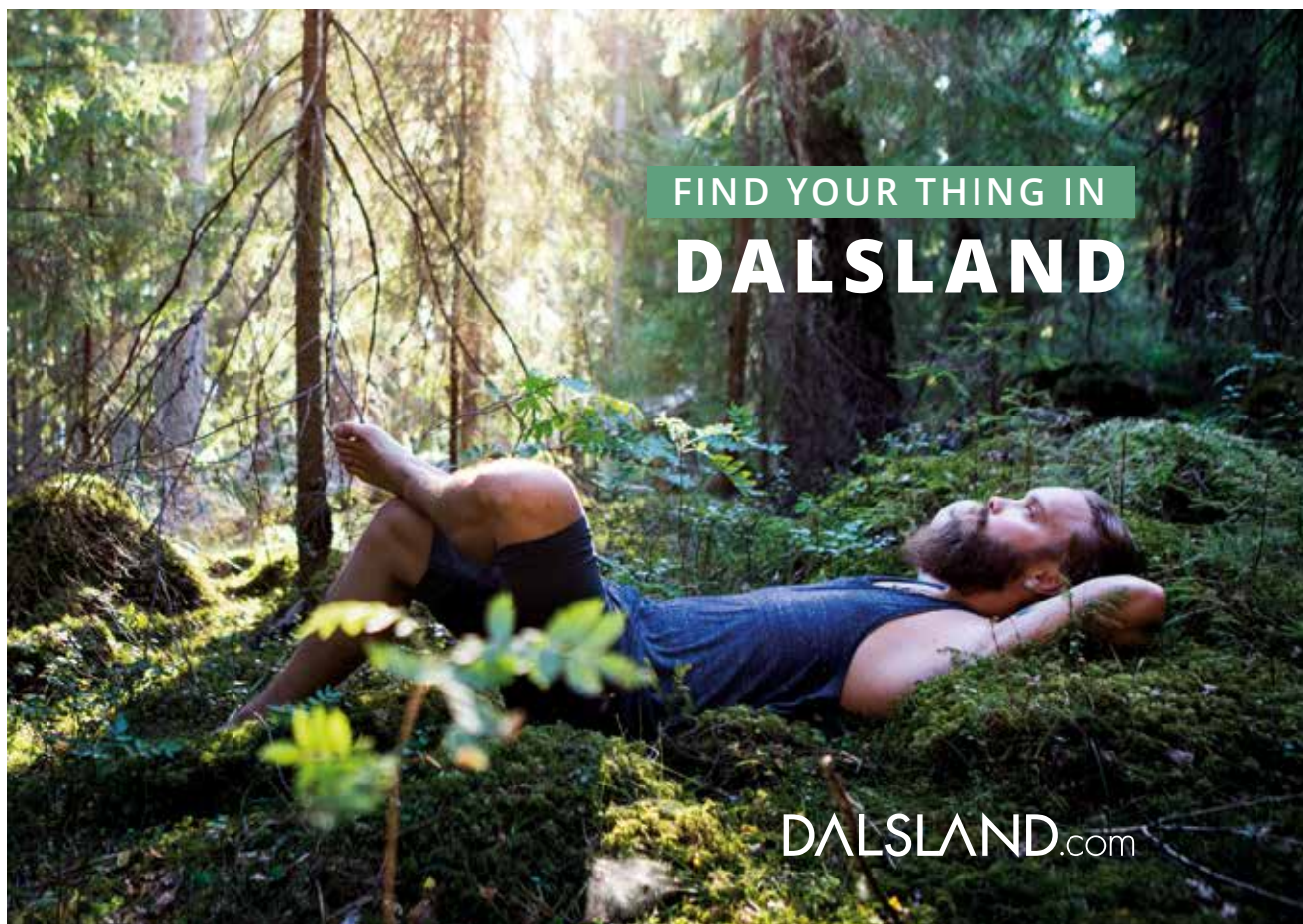


Welcome to  
Åmål's marina and  
motorhome camping  
right at the heart of the town



**Åmåls Turistbyrå**

Hamngatan 1  
662 31 ÅMÅL  
telefon: +46(0)532-17098  
[www.amal.se](http://www.amal.se)



FIND YOUR THING IN  
**DALSLAND**

[DALSLAND.com](http://DALSLAND.com)





RESTAURANT • TERRACE • BAR • POOL • PLAYROOM  
+46 531-727 00 • bengtsfors@firsthotels.se • www.firsthotels.se

## The scenic railway

*Join us for an exciting trip through unspoiled countryside. You travel in a simple and relaxing way by train and cycle-trolley straight into the most scenic areas of the counties of Dalsland and Värmland.*



*Bengtsfors-Håverud-Mellerud.* Scheduled sightseeing tours by canal vessel and train. Book a train ride for an unusual experience.

*Bengtsfors-Årjäng (only summertime).* The trolley journey can be combined with a canoetrip for one or several days, starting from Bengtsfors or Årjäng.



DVVJ, Dal-Västra Värmlands Järnväg

Stationsgatan 666 31 Bengtsfors. Tel. +46(0)531-52 68 01  
Kyrkerud, Årjäng, Tel. +46(0)573-71 17 90  
info@dvvj.se, www.dvvj.se



Välkommen till - Welcome to - Willkommen bei - Welkom bi

## Bengtsfors gästhamn



Gästhamnen med det bästa läget, mitt i Bengtsfors centrum med närhet till service, handel och restauranger. Servicehus med toalett, dusch och tvättstuga. Park med lekplats. Trådlöst Internet.



**BENGTSFORS  
KOMMUN**



TOURISTINFORMATION

EVENTS

EXHIBITONS

CONFERENCES

DALSLAND CENTER  
HÅVERUD

Kanalsvägen 4, 464 72 Håverud, +46 530-189 90  
[www.dalslandcenter.se](http://www.dalslandcenter.se)



**DALSLANDS  
GLASHYTTA**



Glassblowing in Dalsland Center in Håverud  
You can shop:

Utility & Artistic glass • Pottery • Ironwork  
Candles • Linen • Souvenirs • Gifts  
Canoes for rent • Camping cards

**AKVEDUKTSHOPEN**

Open May-Aug. In Sept. Sat-Sun by arrangement.  
Booking and info 0709-969 149, [dalslandsglashytta@telia.com](mailto:dalslandsglashytta@telia.com)  
Kanalsvägen 4, 464 72 Håverud • [www.dalslandsglashytta.se](http://www.dalslandsglashytta.se)



**Baldersnäs Herrgård**

Delightful tastes, magnificent nature  
and classic accommodations!

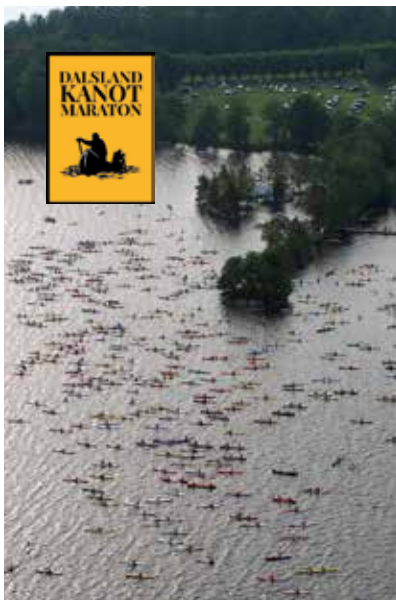
Five course menus - Wine cellar  
Spa bath - English park - Guest harbour  
Crafts house - Animal farm

Accommodation  
from  
**345:-**  
pp



Booking: +46 531-41213 +46 531-41244

[info@baldersnas.com](mailto:info@baldersnas.com) [www.baldersnas.com](http://www.baldersnas.com)



**Dalsland Kanotmaraton 10.e augusti**

Sveriges tuffaste kanotlopp i Sveriges vackraste landskap

**- Challenge yourself closer to nature -**

[www.campdalsland.se](http://www.campdalsland.se)





## UPPERUD 9:9

Hotel Breakfast Jetty Music

Welcome to a 100 year old grain silo - where design meets history. Stay in one of our 5 unique hotel rooms overlooking Dalslands kanal.

Book breakfast and dinner in our café or cook your own food in the hotel rooms.

Downstairs in our great hall we host pub nights and concerts, private events, weddings and conferences. Check our web for programme!



+46 707 498 779

[www.upperud.se](http://www.upperud.se)



## Café Strömsborg Lennartsfors

Open every day 26 June – 12 August

Sandwiches, hamburgers, ice cream, waffles, etc.

GROCERIES

Saturday 20 July 6pm

### Sing-along with LOTTA ENGBERG

and her orchestra, plus others.

Entry SEK 300 (cash or Swish)

Refreshments available

Trankils Folkets Hus/Kulturgruppen

## the Visitor

COTTAGES & HOSTEL

- In the heart of Håverud -



- Restaurant
- Grill
- Pizzeria
- Groceries
- Cottages (mini kitchen, shower and toilet in all cabins)
- Outdoor spa
- Canal tours

FULLY LICENSED

For more information and prices visit our website

Upperudsvägen 4, 464 72 Håverud • Tel. 0530-103 10 • [info@thevisitor.se](mailto:info@thevisitor.se) • [www.thevisitor.se](http://www.thevisitor.se)







## Nössemark-Halden

The shortest boat transport on  
Europe's most scenic round tour.  
Campsite in beautiful Nössemark.

TRANSPORT - GUEST HARBOUR - CAMPSITE - CAFÉ - HANDICRAFT - ACCOMMODATION



Tel. booking and transport Magne +47 69 18 42 00, Marius +47 48 05 78 59



## DALSLANDS KONSTMUSEUM

Where contemporary art and nature meet

\_\_\_ contemporary art \_\_\_ collection \_\_\_ café

**FREE ENTRANCE**

Upperud, 464 40 Åsensbruk, Sweden

Telephone: +46 (0) 530 300 98

See website for current exhibitions  
and opening hours:

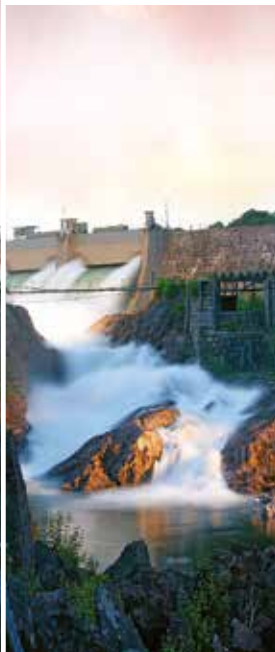
[www.dalslandskonstmuseum.se](http://www.dalslandskonstmuseum.se)



**Dalslands  
konstmuseum**

## TROLLHÄTTAN VÄNERSBORG

[visittv.se](http://visittv.se)



Visit Trollhättan Vänern  
[www.visittv.se](http://www.visittv.se)

tel: +46 520/521 13509

Fb & Instagram: @visittv.se #visittv

## Vänernsborgs Gästhamn och Marina



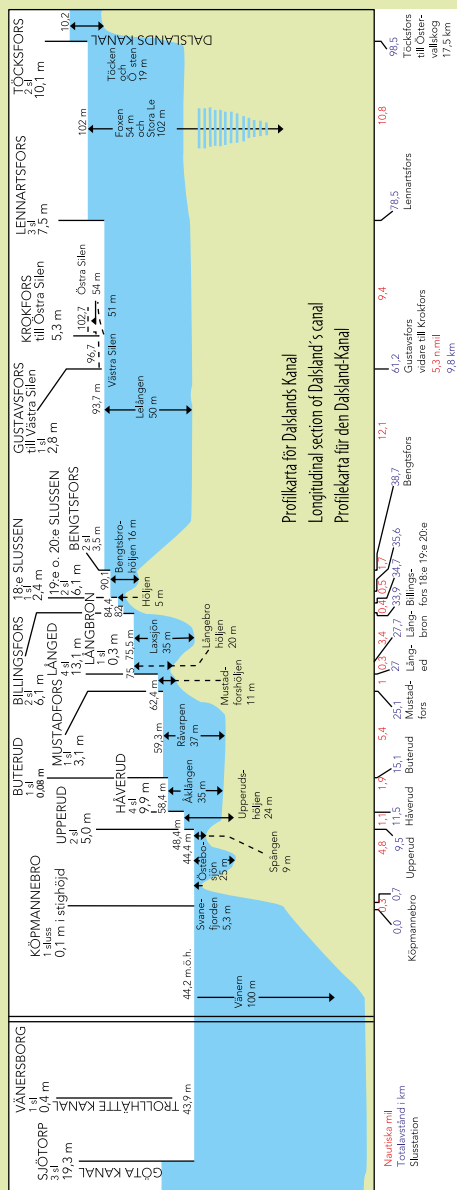
Full Service Marina with  
Motor-Lift-Boat equipment-Fuel  
Winterizing and Boat Rentals  
Place for motorhomes



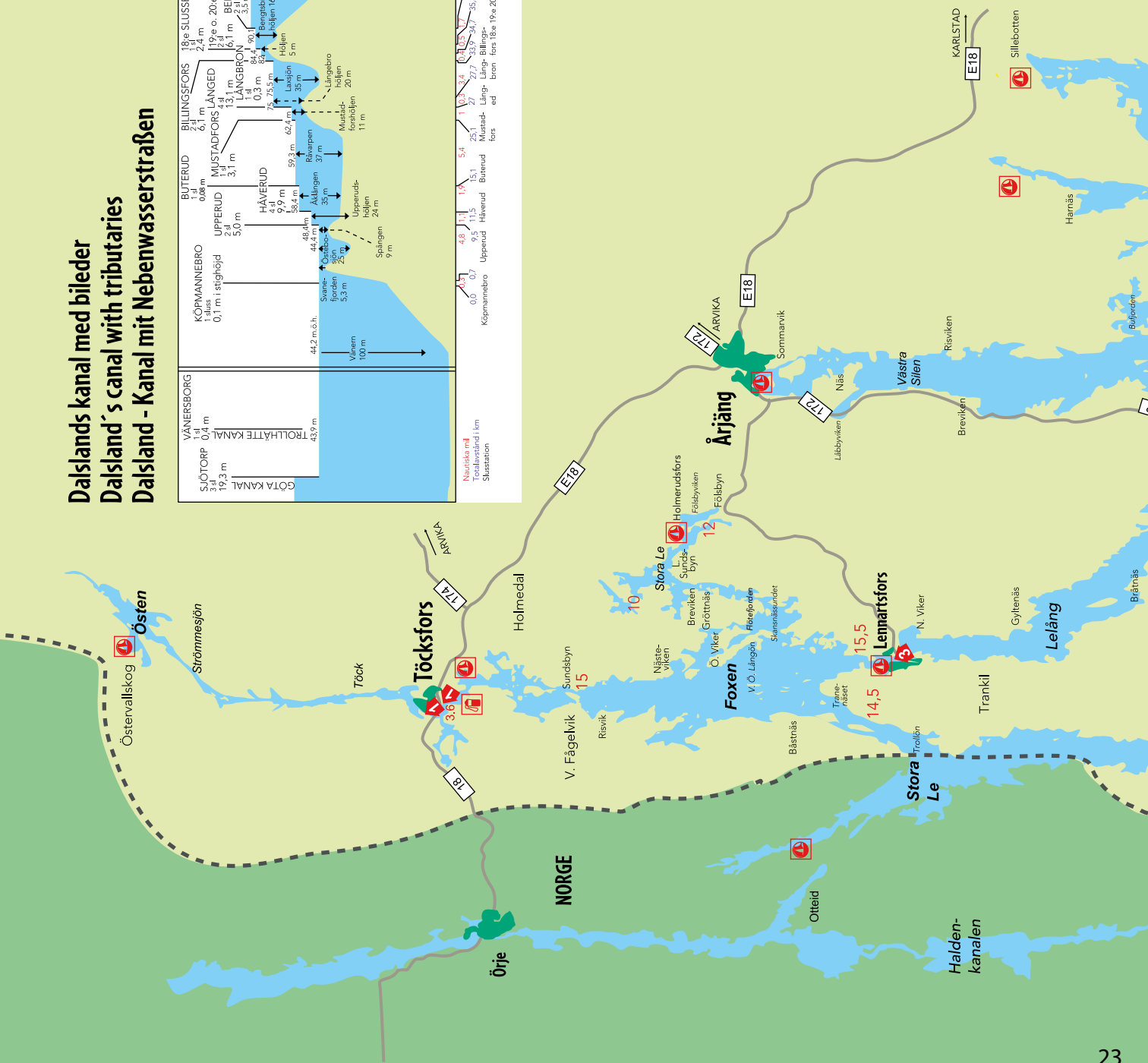
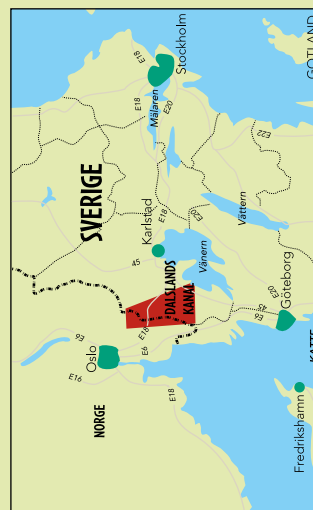
[www.vanersborgsgasthamn.se](http://www.vanersborgsgasthamn.se) • [info@vanersborgsgasthamn.se](mailto:info@vanersborgsgasthamn.se)

Tel. +46 (0)521-657 09 • Mobile +46 (0)705-91 29 90

## Dalsland - Kanal mit Nebenwasserstraßen



- 1 Maxdjup i farleder (min alltid 1.8 m)  
Max. draught in navigable channels (always min 1.8 m)  
Max. Fahrwassertiefe (Mindesttiefe immer 1.8 m)
- 2 Sjöarnas höjd över havet (44.3 m)  
Lake height above sea level (44.3 m)  
Höhe der Seen über dem Meeresspiegel (44.3 m)
- 3 Avstånd i nautiska mil mellan stationerna  
Distance in nautical miles between flights of locks  
Entfernung zwischen den Stationen in Seemeilen
- 4 Avstånd i km från Köpmannebro  
Distance in km from Köpmannebro  
Entfernung in km von Köpmannebro
- 5 Slussstationernas namn inkl. uppgifter om antal  
slussar per station samt stighöjden  
Lock names including information about number of lock  
chambers in each flight, and total difference in levels  
Namnen der Schleusenstationen einschließlich Angabe der  
zur Anzahl der Schleusen pro Station und der Hübhoheit





- [illegible]



## Nautical chart

The nautical chart with canal description gives you detailed information about navigable routes, guest harbours, sights, useful facts, services and canal history. It is only available in Swedish. Price: SEK 510 excluding postage. The boat sport permit is printed on coated, water-resistant and tear-resistant paper.

## Canoeing country

Detailed maps, countryside information, camp sites, in fact all the information you need to make your canoeing holiday on the Dalsland Canal a success. Price: SEK 152 excluding postage.

## Tips for a successful canal journey

Brochure giving tips and advice to ensure your journey on the Dalsland Canal goes smoothly. The brochure is free and is available in Swedish, English and German. Make sure you pick up a copy of the brochure when you buy your lock pass.

Order nautical chart on [www.dalslandskanal.se](http://www.dalslandskanal.se) or send a mail to [info@dalslandskanal.se](mailto:info@dalslandskanal.se)

## Tourist offices along the canal:

### BENGTSFORS

Sågudden 1, SE-666 30 Bengtsfors.  
Tel. +46 531-52 63 55, [www.dalsland.com/bengtsfors](http://www.dalsland.com/bengtsfors),  
e-mail [turism@bengtsfors.se](mailto:turism@bengtsfors.se)

### ED

Torget 4, SE-668 30 ED. Tel. +46 534-190 22  
[www.dalsland.com/dalsed](http://www.dalsland.com/dalsed), e-mail [tourist@dalsed.se](mailto:tourist@dalsed.se).

### HÅVERUD

Dalsland Center, SE-464 72 Häverud. Tel. +46 530-189 90  
[www.dalsland.com/mellerud](http://www.dalsland.com/mellerud), [info@dalslandcenter.com](mailto:info@dalslandcenter.com)

### ÅRJÄNG

Storgatan 64, SE-672 29 Årjäng.  
Tel. +46 573-141 36, [www.arjang.se](http://www.arjang.se), e-mail [turist@arjang.se](mailto:turist@arjang.se)



**Dalslands kanal**

Dalslands Kanal AB • Nils Ericsons väg • Upperud • 464 72 Häverud  
Tel. +46 (0)530-447 50 • Fax +46 (0)530-447 55  
[info@dalslandskanal.se](mailto:info@dalslandskanal.se) • [www.dalslandskanal.se](http://www.dalslandskanal.se)



**Follow us on Facebook**

